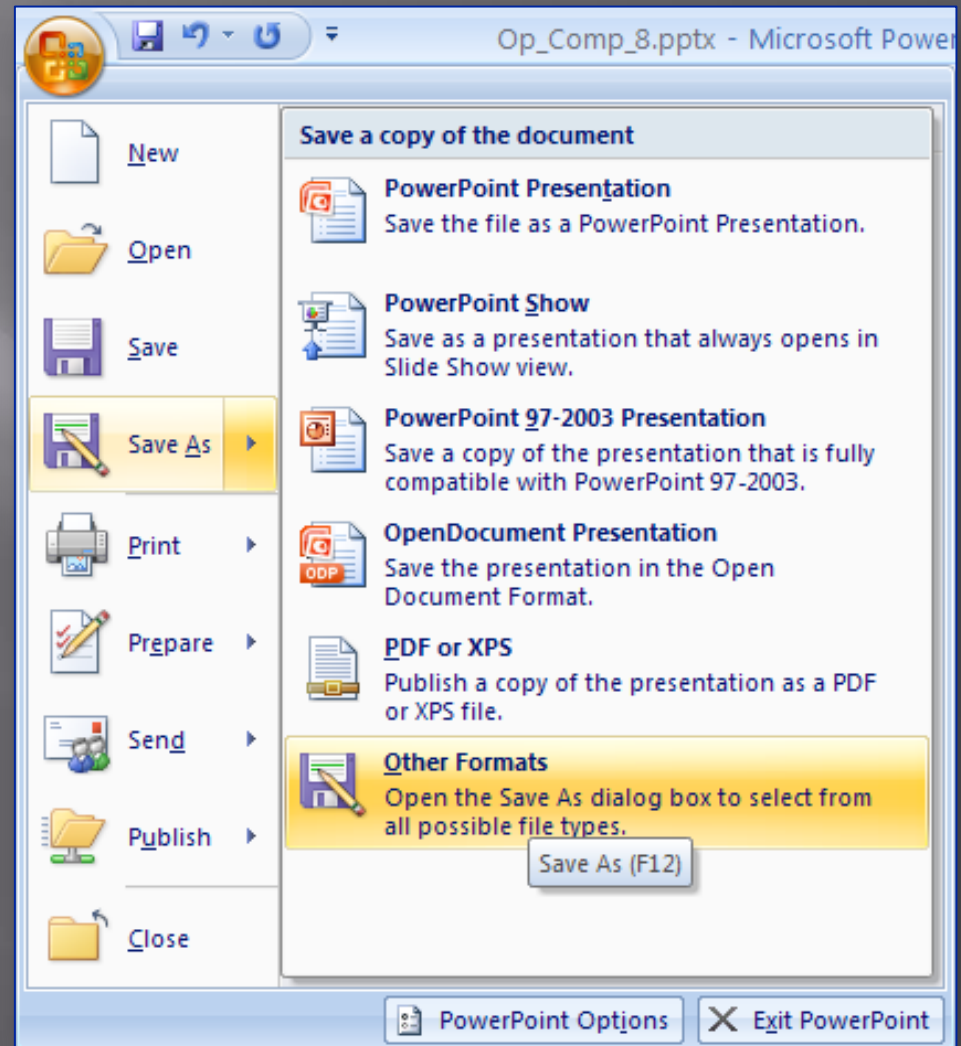


Pagini Web ~ Limbajul Html

1. Crearea unei pagini Html
 - din Word
 - din PowerPoint
2. Legarea paginilor
 - Linkuri interne
 - Linkuri externe
3. Etichete, Icon, ...

Generarea automată a paginilor Web

- Din meniul *File* comanda *Save As* se va selecta tipul documentului (*Save as type*) *Web Page*, și prin butonul *Save* se va genera fișierul cu extensia *htm/html* și un subdirector cu paginile corespunzătoare slide-urilor (vezi imaginea următoare).



Generarea din Power Point

Microsoft PowerPoint - [Web.htm]

File Edit View Insert Format Tools Slide Show Window Help

Type a question for help

Times New Roman 24 B I

Outline Slides

1 Operare pe Calculator
Vasile Preimerean

2 INFORMAȚII GENERALE
DESPRE CURS:

- TITLUL DISCIPLINEI:
Operare pe Calculator
- CODUL DISCIPLINEI:
YTC0005
- ANUL SI SEMESTRUL
DESFĂȘURARE A
CURSULUI: ANUL I, S
- NR. DE CREDITE: 4,
CURSULUI: DISCIPLIN
OBLIGATORIE
- PAGINA WEB A
CURSULUI:
http://www.cs.ubbcluj.ro/Op_Calc.html
- LOCUL DE
DESFĂȘURARE: FEF
CLUJ-NAPOCA
- PROGRAMAREA ÎN C
A ACTIVITĂȚILOR: Co
nraului

Slide 1 of 8

Save As

Save în: Web

Name	Date modif...	Type	Size	Tags
Web_files				
Web.htm				

My Recent Documents

Desktop

My Documents

My Computer

My Network Places

Save a copy and customize its contents Publish...

Page title: PowerPoint Presentation Change Title...

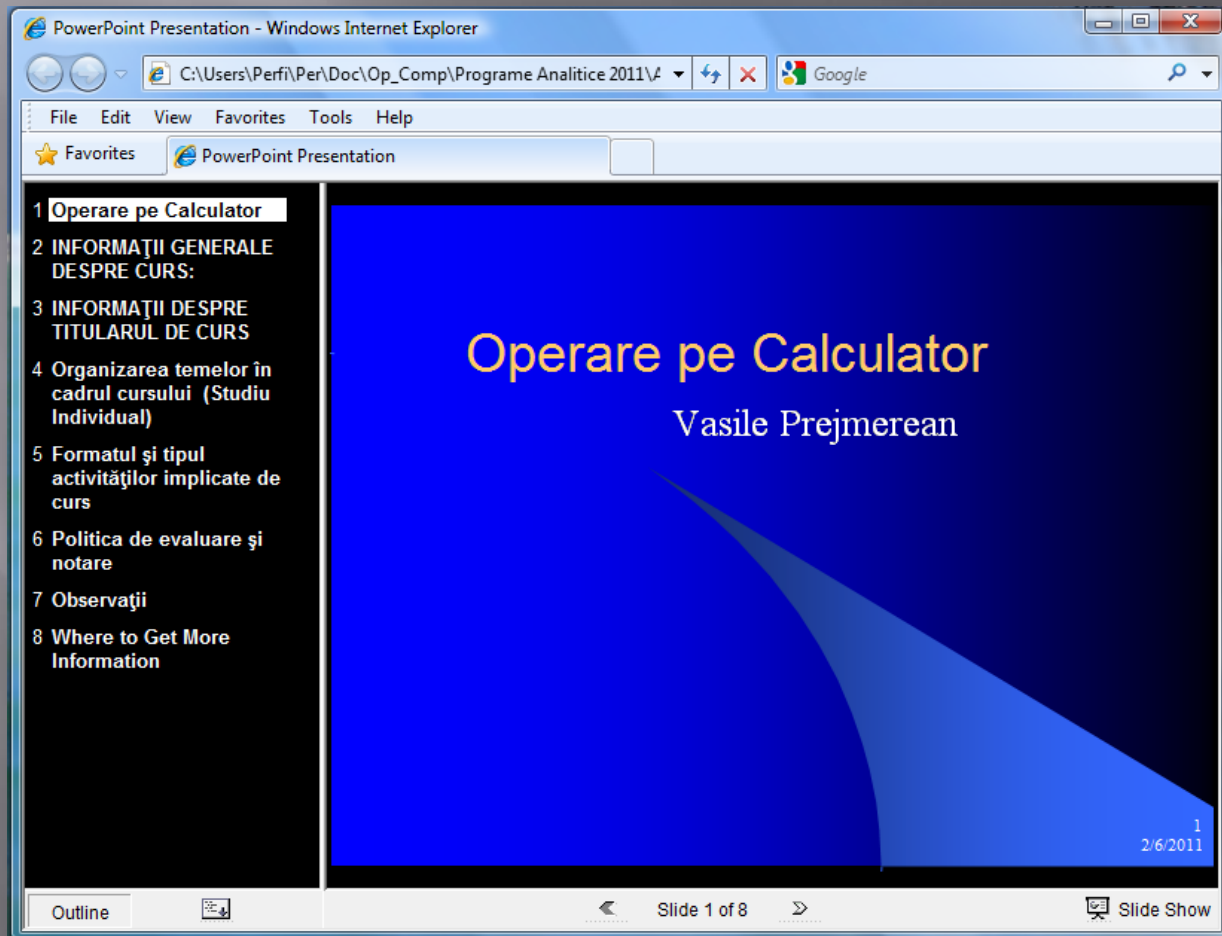
File name: Web.htm

Save as type: Web Page (*.htm; *.html)

Save Cancel

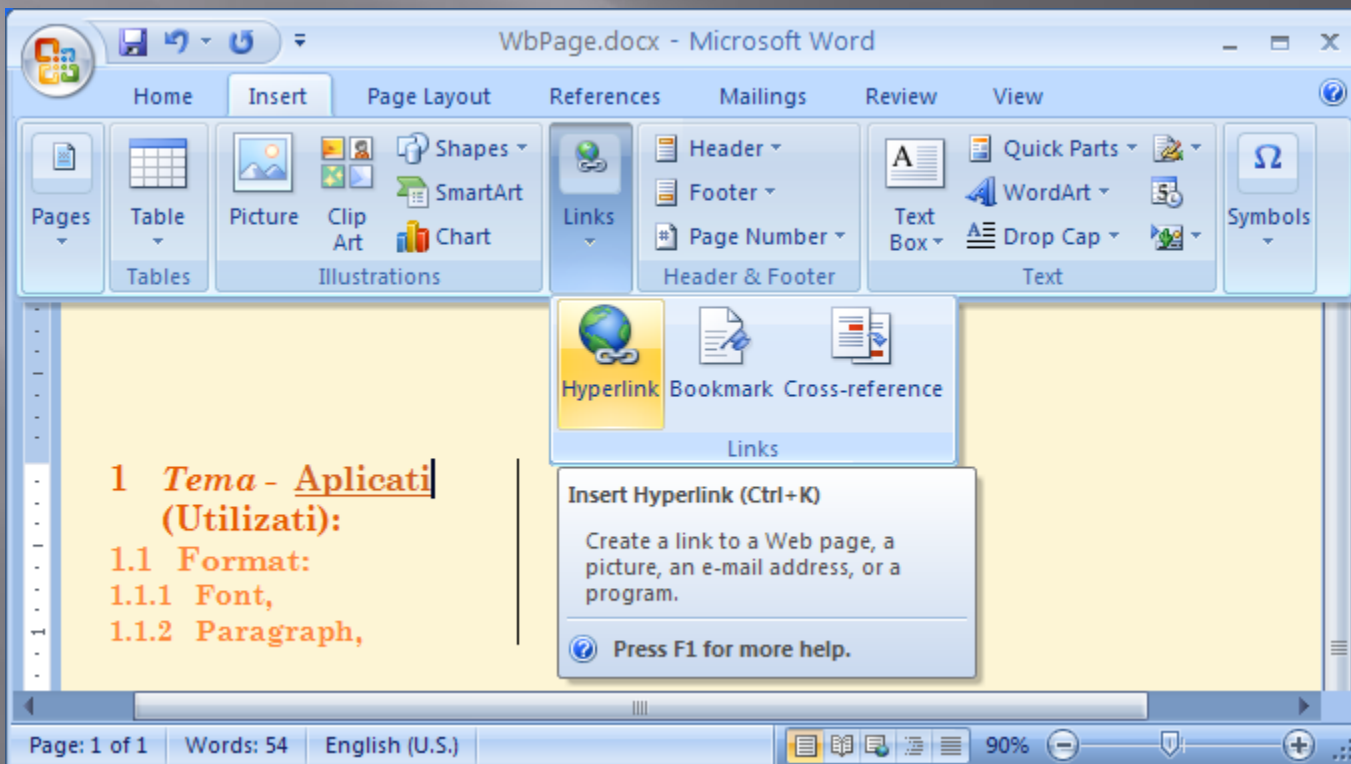
Pagina generata din Power Point

- În imaginea de mai jos se poate vedea pagina principală, de unde se poate naviga în celelalte pagini afișate în stânga.

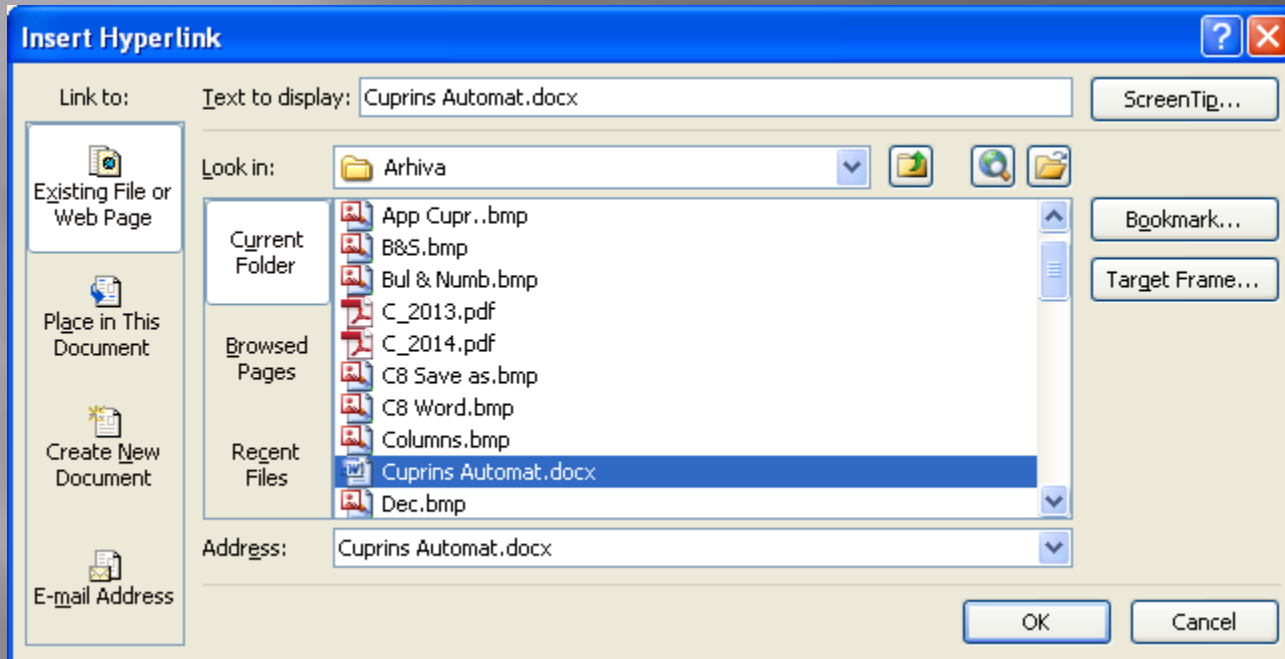


Generarea din Word

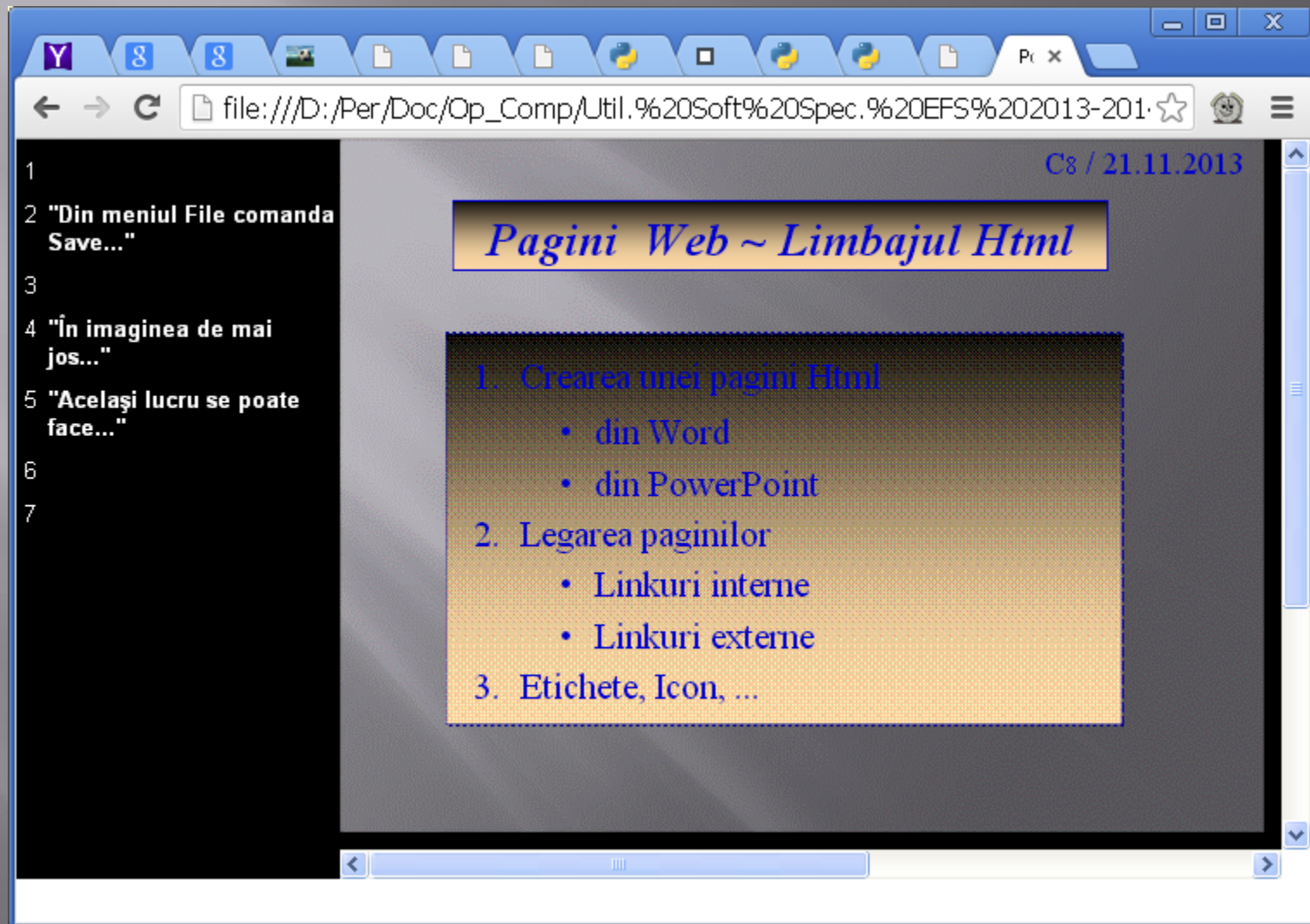
- Același lucru se poate face și pentru un document *Word*, iar inserarea de legături spre alte pagini sau în cadrul aceluiași document se poate face prin meniul *Insert*, funcția *Hyperlink*.



Inserarea legaturii



Pagina generata pentru Curs 8 (Ppt)



The image shows a screenshot of a web browser window. The address bar displays a file path: `file:///D:/Per/Doc/Op_Comp/Util.%20Soft%20Spec.%20EFS%202013-201...`. The browser's tab bar shows several tabs, including one with a 'Y' icon and another with a 'g' icon. The main content area of the browser displays a slide from a presentation. The slide has a dark background and a light-colored title box at the top containing the text *Pagini Web ~ Limbajul Html*. Below the title, there is a list of topics:

1. Crearea unei pagini Html
 - din Word
 - din PowerPoint
2. Legarea paginilor
 - Linkuri interne
 - Linkuri externe
3. Etichete, Icon, ...

On the left side of the slide, there is a vertical list of numbers 1 through 7, which appear to be line numbers for a text area. The text in this area is partially visible and includes phrases like "Din meniul File comanda Save...", "In imaginea de mai jos...", and "Acelasi lucru se poate face...".

Pagina generata din Word

file:///D:/Per/Doc/Op_Comp/Util.%20Soft%20Spec.%20EFS%202013-2014/Arhiva/B&S.bmp

1 Tema - Aplicati (Utilizati):

1.1 Format:

- 1.1.1 Font,
- 1.1.2 Paragraph,
- 1.1.3 Bullets & Numbering,
- 1.1.4 Borders,
- 1.1.5 Columns,
- 1.1.6 BackGround

[Cuprins Automat.docx](#)

1.2 Alt titlu

Contents

1 Tema - Aplicati (Utilizati):

file:///D:/Per/Doc/Op_Comp/Util. Soft Spec. EFS 2013-2014/Arhiva/B&S.bmp

Documentul *Html* generat din *Ppt*

```
<html>

<head>
<meta http-equiv=Content-Type content="text/html;
charset=windows-1252">
<meta name=ProgId content=PowerPoint.Slide>
<meta name=Generator content="Microsoft PowerPoint 12">
<link id=Main-File rel=Main-File href=" ../Op_Comp_8.htm">
<link rel=Preview href=preview.wmf>
<title>Power_Point</title>
<![if !ppt]><script src=script.js></script><script>
<!--
var gNavLoaded = gOtlNavLoaded = gOtlLoaded = false;
function Load()
{
str=unescape(document.location.hash),idx=str.indexOf('#')
if(idx>=0) str=str.substr(1);
if(str) PPTSld.location.replace(escape(str));
}
//-->
</script>
<!--[if gte IE 5]>
<object id=MSOANIM classid="CLSID:A4639D2F-774E-11D3-
A490-00C04F6843FB"
codebase="http://download.microsoft.com/download/PowerPoint2
002/Install/10.0.2609/WIN98MeXP/EN-
US/msorun.cab#version=11,0,0,1"></object>
<![endif]-->
<![endif]>
</head>
<frameset rows="*,25" border=0>
<frameset cols="25%,*" onload="Load()" id=PPTHorizAdjust
framespacing=1 frameborder=1>
<frame src=outline.htm title="Outline" name=PPTOtl>
<frame src=slide0001.htm title="Slide" name=PPTSld>
</frameset>
<frameset cols="25%,*" framespacing=1>
<frame src=outline.htm title="Outline
Navigation Bar" name=PPTOtlNav scrolling=no noresize>
<frame src=outline.htm title="Slide
Navigation Bar" name=PPTNav scrolling=no noresize>
</frameset>
</frameset>
</html>
```

Documentul *Html* generat din *Word*

```
<html>

<head>
<meta http-equiv=Content-Type content="text/html;
charset=windows-1252">
<meta name=Generator content="Microsoft Word 12
(filtered)">
<title>ORAR </title>
<style>
<!--
/* Font Definitions */
@font-face
    {font-family:Wingdings;
panose-1:5 0 0 0 0 0 0 0 0;}
@font-face
    {font-family:"Cambria Math";
panose-1:2 4 5 3 5 4 6 3 2 4;}
@font-face
    {font-family:Tahoma;
panose-1:2 11 6 4 3 5 4 4 2 4;}
@font-face
    {font-family:"Century Schoolbook";
panose-1:2 4 6 4 5 5 5 2 3 4;}
```

```
/* Style Definitions */
p.MsoNormal, li.MsoNormal, div.MsoNormal
    {margin:0in;
margin-bottom:.0001pt;
font-size:12.0pt;
font-family:"Times New Roman","serif";}

h1
    {mso-style-link:"Heading 1 Char";
margin-top:24.0pt;
margin-right:0in;
margin-bottom:0in;
margin-left:.3in;
margin-bottom:.0001pt;
text-indent:-.3in;
page-break-after:avoid;
font-size:14.0pt;
font-family:"Century Schoolbook","serif";
color:#E65B01;}

h2
    {mso-style-link:"Heading 2 Char";
margin-top:10.0pt;

...

</div>

</body>

</html>
```

Adaugare Ico & Gif

- ▣ `<head> <meta http-equiv=Content-Type content="text/html; charset=windows-1252"> <meta name=ProgId content=Word.Document> <meta name=Generator content="Microsoft Word 11"> <meta name=Originator content="Microsoft Word 11"> <link rel=File-List href="Op_Calc_files/filelist.xml"> <link rel=Edit-Time-Data href="Op_Calc_files/editdata.mso"> <link rel="shortcut icon" href="Op_Comp.ico" /> <link rel="icon" type="image/gif" href="Op_Comp.gif">`





Pagini Web

1. Crearea unei pagini Html
 - din Word
 - din PowerPoint
2. Legarea paginilor
 - Linkuri interne
 - Linkuri externe
3. Etichete, Icon, ...

