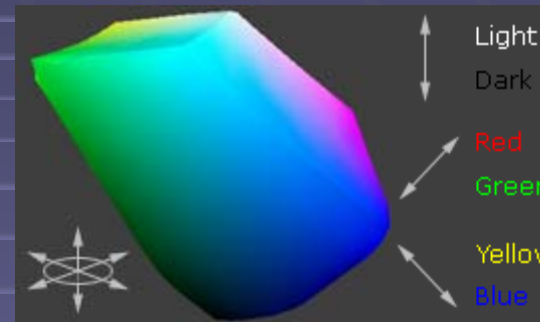


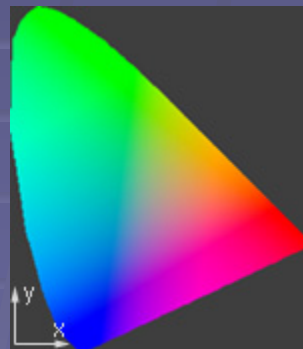
Vizualizarea culorilor

(<http://www.cambridgeincolour.com/tutorials.htm>)

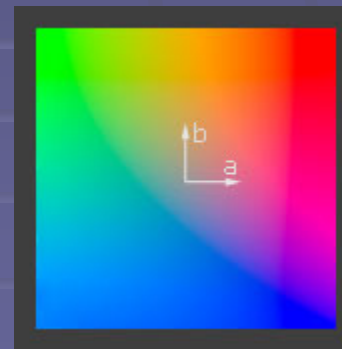
Pe *verticala* este masurata luminozitatea, iar pe *orizontala* rosu-verde, respectiv galben-albastru:



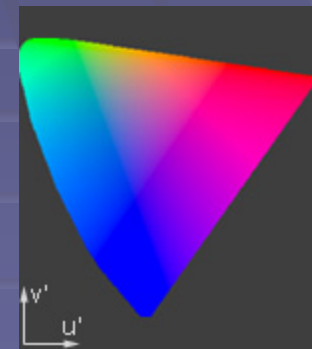
Spatiul CIE al
culorilor vizibile:



CIE XYZ (1931)



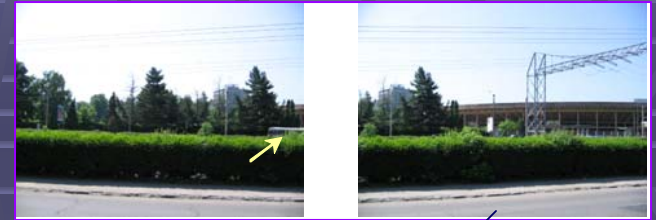
CIE L a* b*



CIE L u'v' (1976)

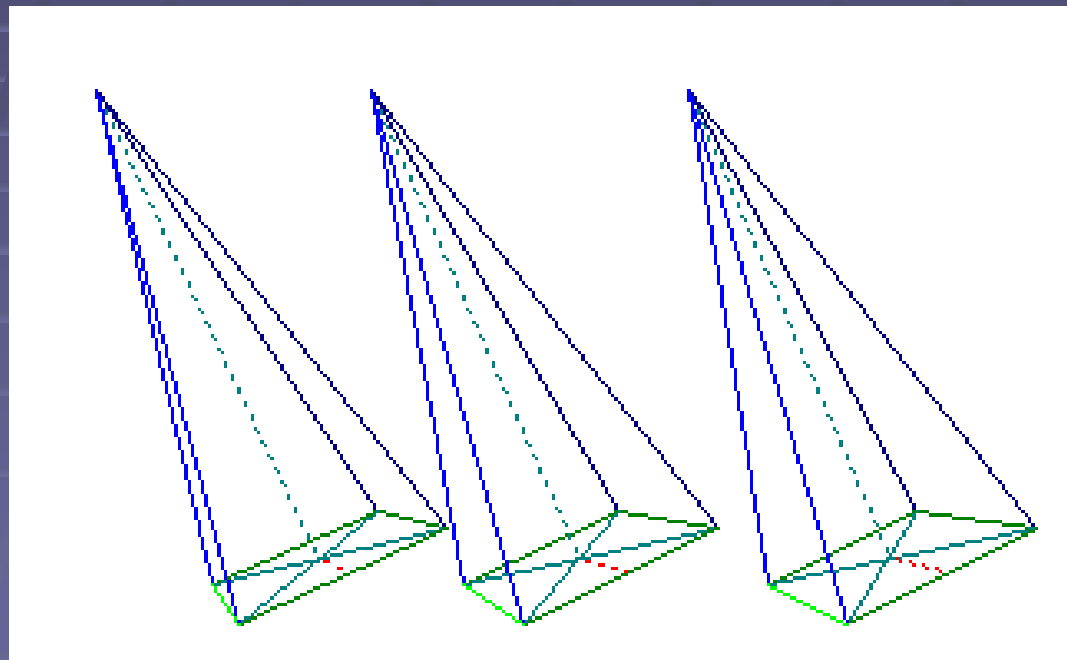
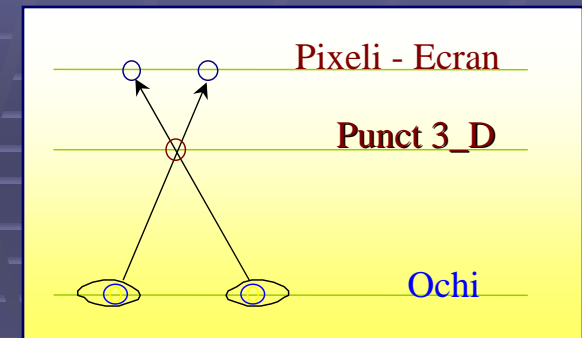
... Concatenarea imaginilor

The Stitching of Images





Vizualizarea în fața ecranului



Stereograme realizate prin puncte aleatoare

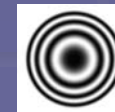
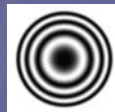


Random Dot Stereogram

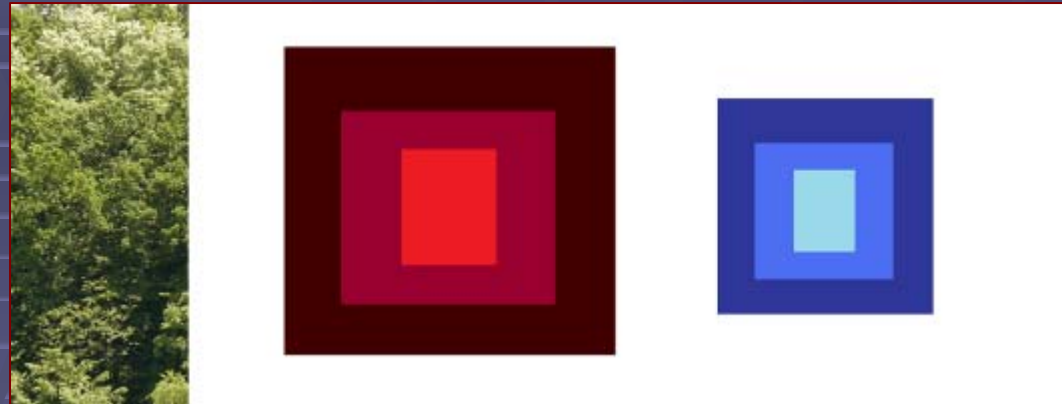
Stereograme realizate prin puncte aleatoare



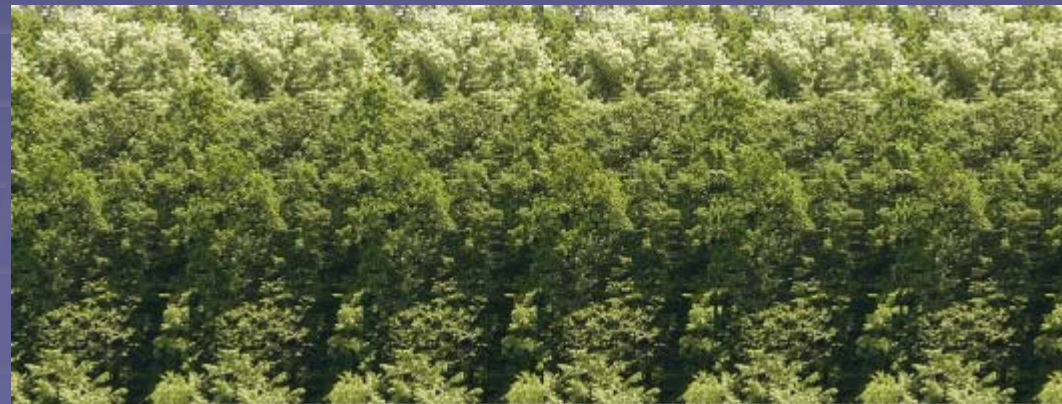
Stereogramă cu suprafețe



Utilizarea culorilor la definirea adancimii



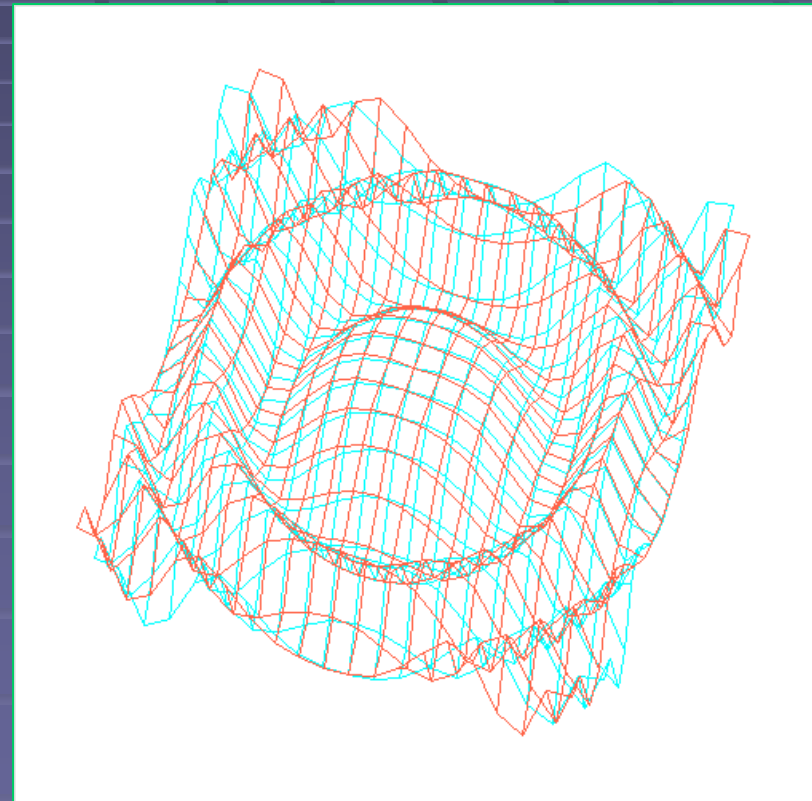
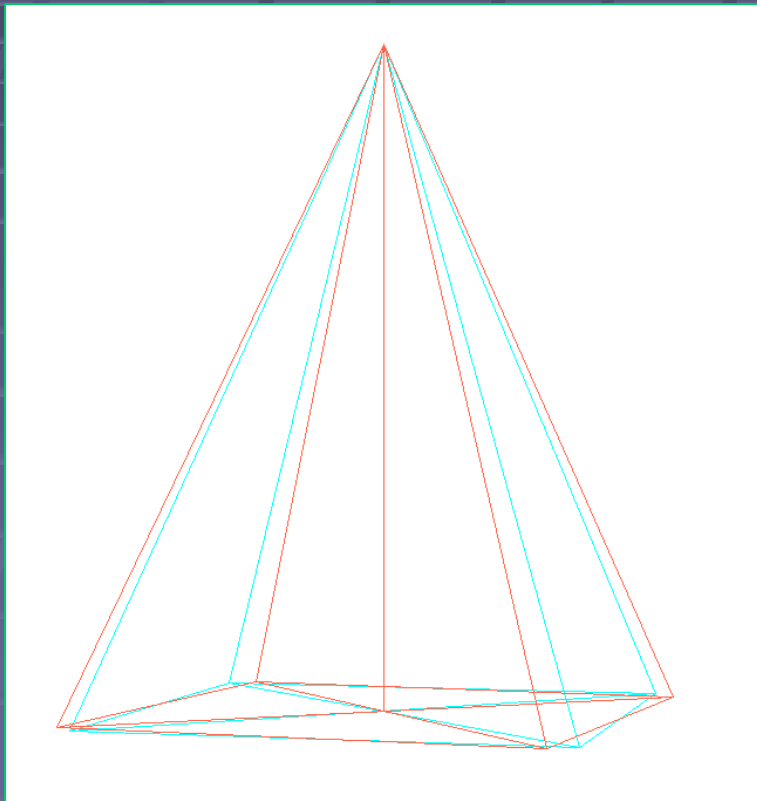
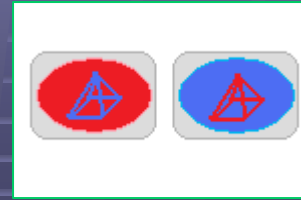
Modelul și adâncimile codificate



Stereogramă construită pe baza unei imagini codificate



Anagliffe



Anagliffe geometriche

... Anaglife



Anaglifă cu nuanțe deschise

... Anaglife



Anaglifă cu nuanțe închise

