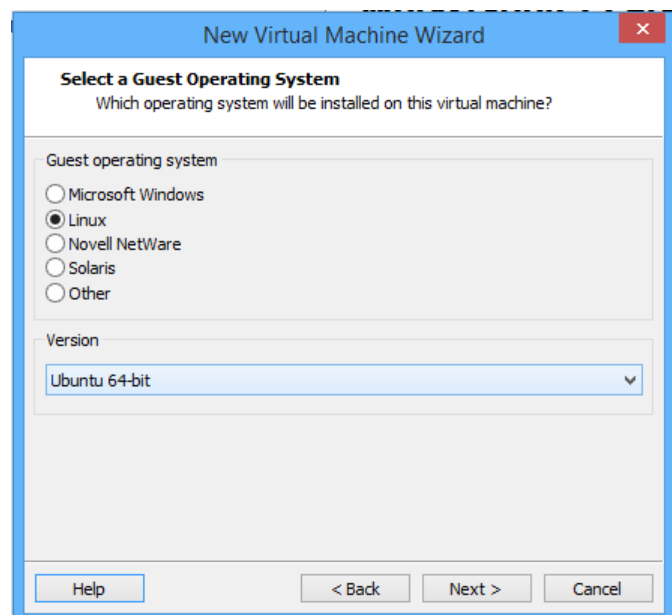
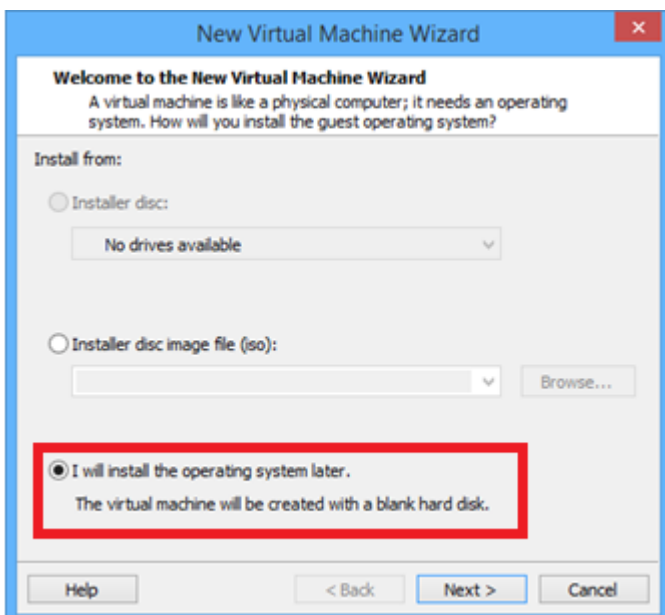
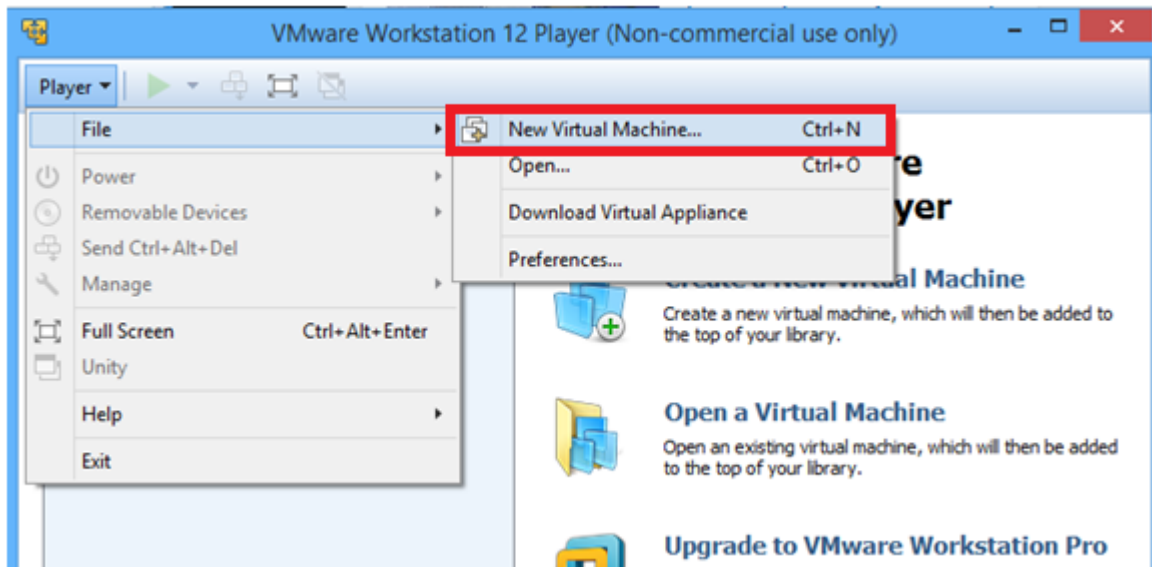


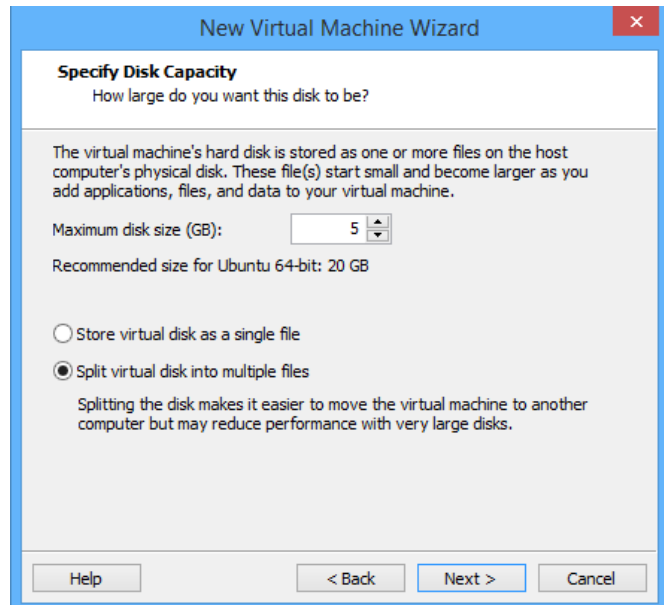
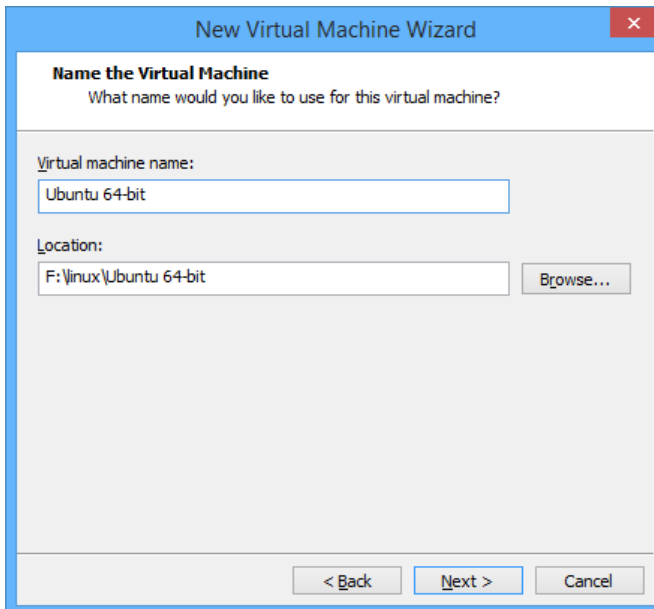
Am nevoie de:

- vmware player - <http://www.vmware.com/products/player/playerpro-evaluation.html>
- ubuntu server - <https://www.ubuntu.com/download/server>

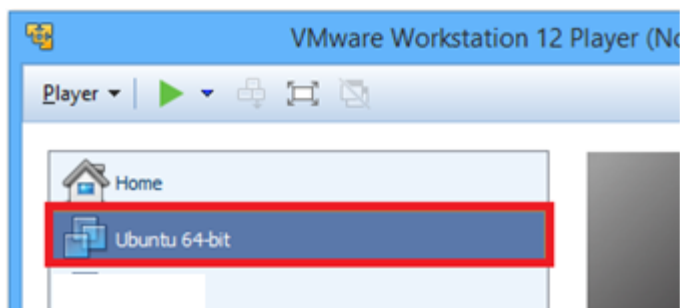
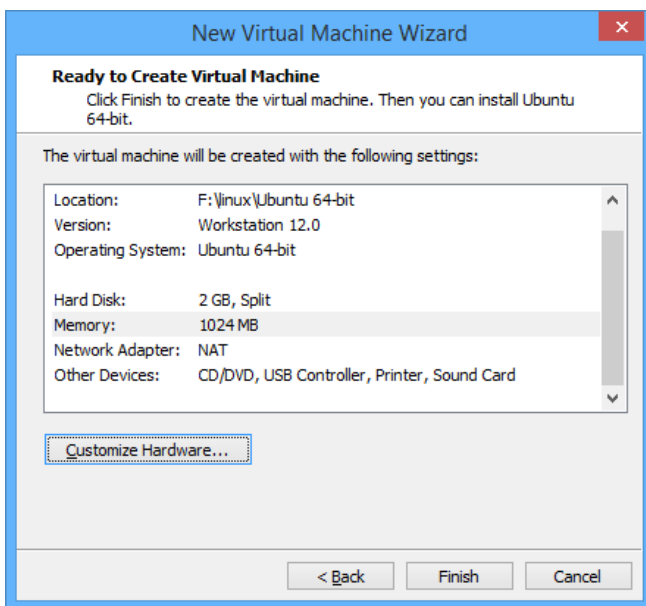
Instalare Ubuntu server in vmware workstation player:

- in vmware player se creeaza o masina virtuala

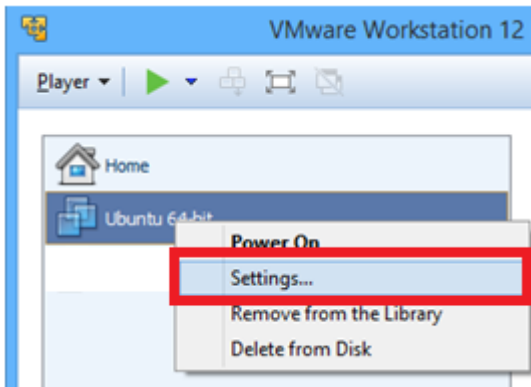




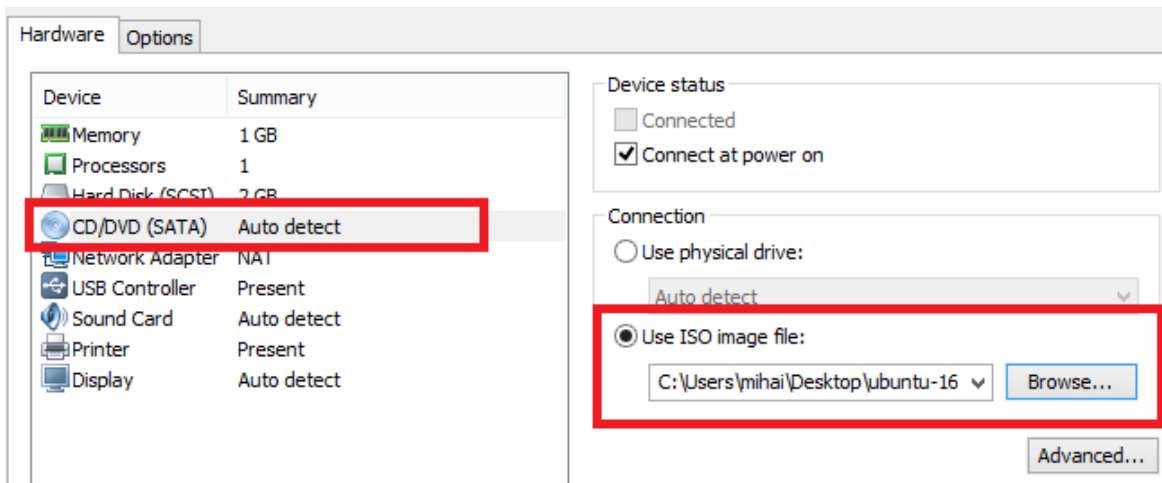
- in urmatorul pas se pot configura (dupa nevoie) specificatiile masinii virtuale (CPU, memorie RAM, interfata retea, etc. (se pot utiliza setarile implicite: 1CPU, 1024 Mb RAM, NAT network adapter, etc.)



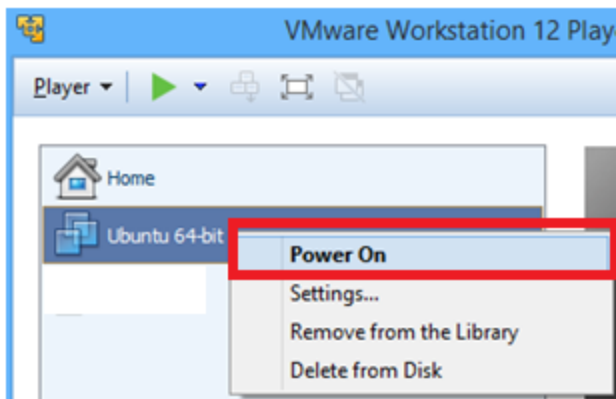
- click dreapta pe "Ubuntu 64-bit" -> Settings



- la optiunea CD/DVD se monteaza imaginea ubuntu descarcata (ex. ubuntu-16.04.2-server-amd64.iso)



- se porneste masina virtuala si se instaleaza sistemul de operare



- pasul de instalare a sistemului de operare:

- se alege limba
- optiunea "install ubuntu server" apoi next in fiecare fereastra (enter) - se pot utiliza setarile implicite

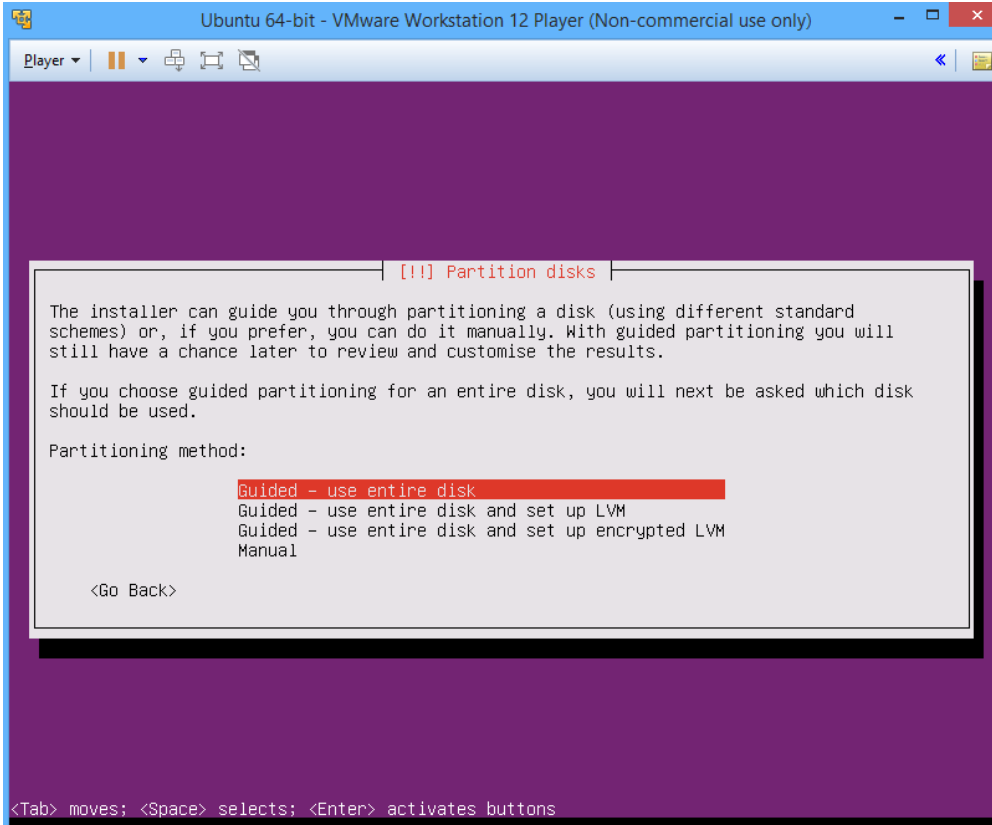
- !! in versiunea server nu este interfata grafica (mouse)

- pentru instalare se va naviga folosind tastele "tab", "sageti", etc.

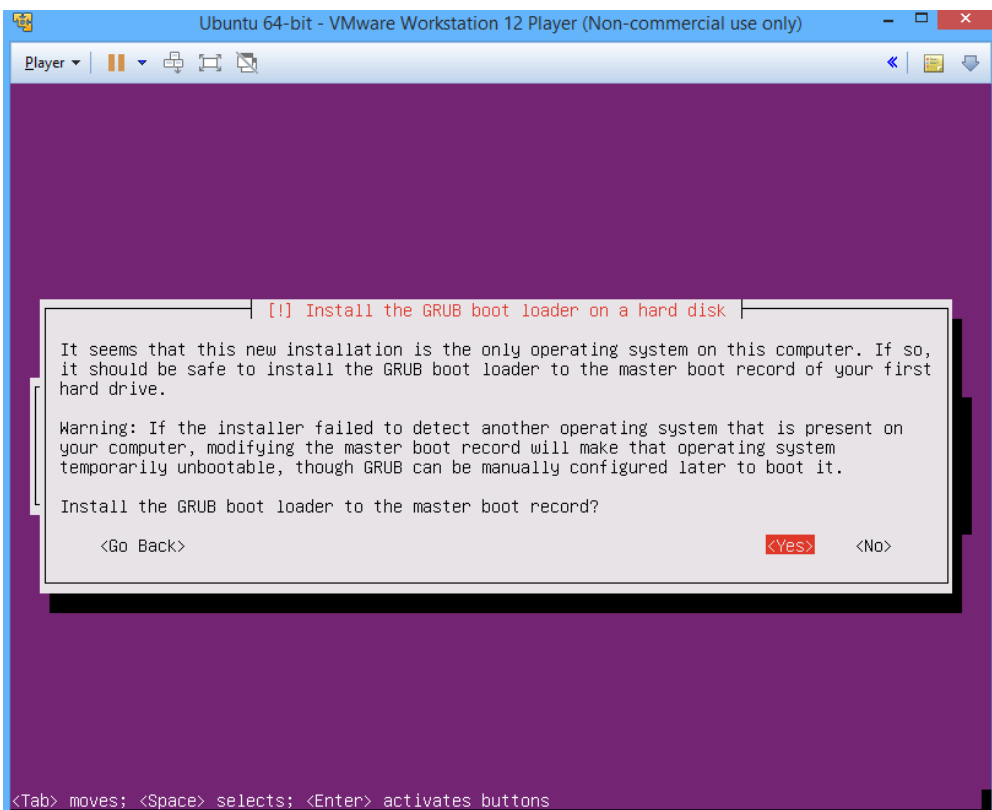
- pentru a putea interactiona cu masina virtuala: click in fereastra vmware sau combinatia de taste CTRL+D (cand fereastra aplicatiei vmware player este selectata).

- !! pentru a elibera controlul din masina virtuala (pentru a putea interactiونا cu sistemul de operare de baza)
combinatia de taste CTRL+ALT

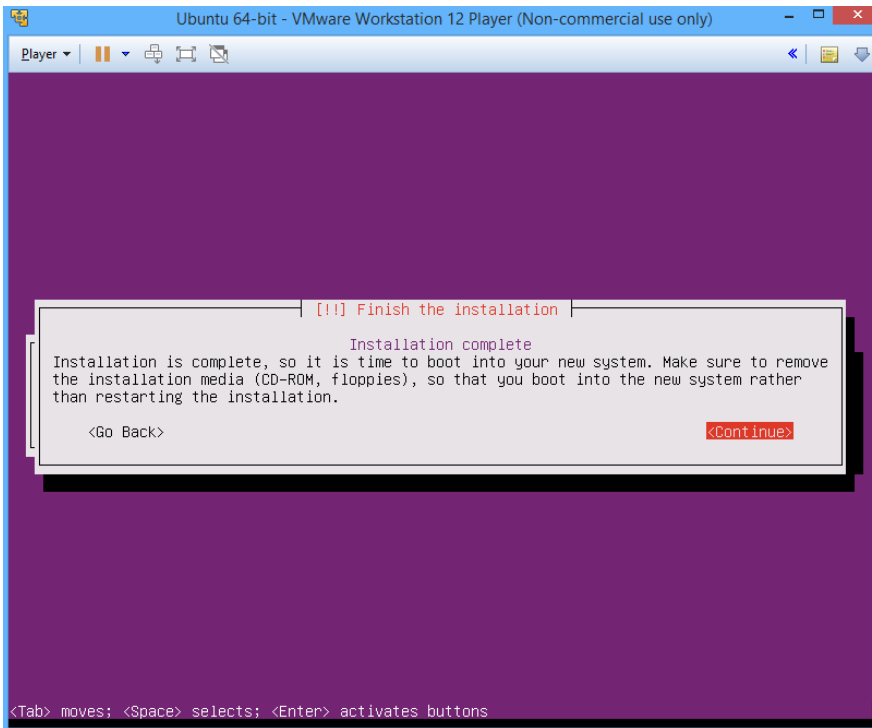
- in pasul de fragmentare a discului se poate alege optiunea standard:



- pasul de instalare a GRUB (boot loader manager)

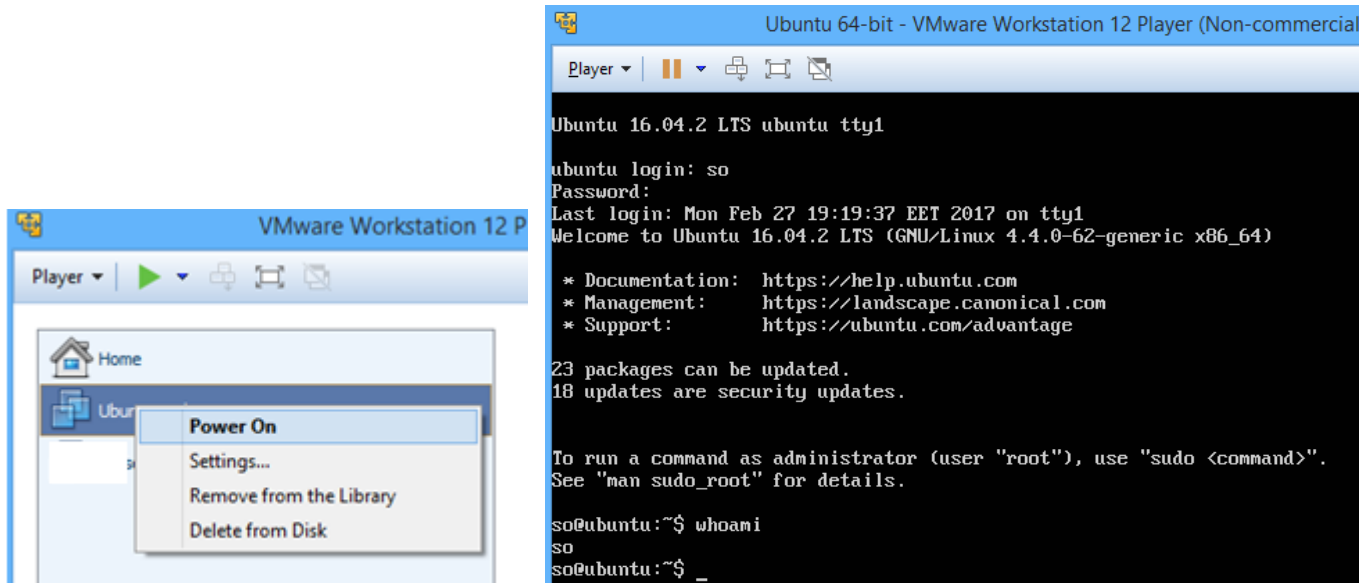


- la final



Pentru a porni masina virtuala

considerand utilizatorul "so"



- **pentru a partaja un fisier cu sistemul de operare gazda:** <https://pubs.vmware.com/workstation-9/index.jsp?topic=%2Fcom.vmware.ws.using.doc%2FGUID-D6D9A5FD-7F5F-4C95-AFAB-EDE9335F5562.html>